

# Motivating Staff

## Building a Great Team

[www.CharacterAvenue.com](http://www.CharacterAvenue.com)

Confidence

Enthusiastic

Communication

Professionalism

Flexibility



Trust

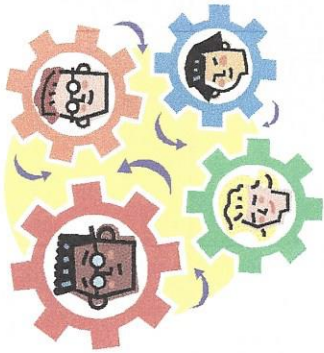
Share the Work / Do the Work

Cooperation

Responsibility

Commitment

Set Goals



# Personality Study

Lion



Golden Retriever



Otter



Beaver



# TEAM WORK

*Creates, maintains, and enriches the development of a group of people into a cohesive unit.  
Encourages and builds mutual respect, trust, and cooperation among team members.*

1. \_\_\_\_\_ Having confidence and faith in another person's goodwill.

*Ex.* \_\_\_\_\_

2. \_\_\_\_\_ The sharing of information between two or more individuals or groups to reach a *common understanding*.

*Ex.* \_\_\_\_\_

3. \_\_\_\_\_ Boosts morale and fuels the team spirit to develop and achieve greater levels of accomplishment.

*Ex.* \_\_\_\_\_

4. \_\_\_\_\_ Being pleasant with others on the job displaying a good-natured, cooperative attitude and helpful on the job.

*Ex.* \_\_\_\_\_

5. \_\_\_\_\_ Developing one's own ways of doing things, guiding oneself with little or no supervision and depending on oneself to get things done. Believing in one's own abilities and skills to get the job done.

*Ex.* \_\_\_\_\_

6. \_\_\_\_\_ The desire to participate on the team to accomplish the team mission and the expected outcomes.

Ex. \_\_\_\_\_

7. \_\_\_\_\_ Maintaining code of ethics and character in your conduct:  
\*attire \*demeanor \*communication skills \*leadership \*self-control \*integrity

Ex. \_\_\_\_\_

8. \_\_\_\_\_ Being open to change (positive or negative) and to considerable variety in the workplace.

Ex. \_\_\_\_\_

9. \_\_\_\_\_ Willingness to take a responsibilities and challenges.  
Take the initiative to get it done.

Ex. \_\_\_\_\_

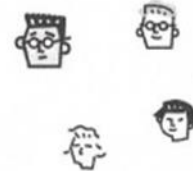
10. \_\_\_\_\_ Being reliable, dependable, and fulfilling obligations.

Ex. \_\_\_\_\_

11. \_\_\_\_\_ Planning and preparation of daily, weekly, and monthly tasks and objectives to achieve the team expectations.

Ex. \_\_\_\_\_

# Personality Study



## Lion

- 1. Visionary - Great Leader
- 2. Take charge person
- 3. Assertive
- 4. Daring, Unafraid of new situations
- 5. Ready to take a challenge



- 6. Self-starters
- 7. Intrinsically motivated
- 8. Firm & serious about what is expected
- 9. Curious & loves to learn
- 10. One time frame - NOW

## Golden Retriever

- 1. Sensitive
- 2. Nurturing
- 3. Loyal & faithful friend
- 4. Extremely empathic
- 5. Supportive



- 6. Gets self-esteem by helping others
- 7. Patient & willing to wait for something
- 8. Peacemaker
- 9. Listen more than talk

## Otter

- 1. Talks a lot
- 2. Tells stories
- 3. Parties "waiting to happen"
- 4. Great networkers
- 5. Likes being in a group



- 6. Energetic
- 7. Encouragers & loves people
- 8. Optimistic & enthusiastic
- 9. "Lighten Up" philosophy

## Beaver

- 1. Organized
- 2. Notices little details
- 3. Likes routine - doesn't like changes
- 4. Quality job
- 5. "Do it right" philosophy



- 6. Neat & tidy
- 7. Reads the instruction book
- 8. Persistent
- 9. Straightens crooked pictures
- 10. Needs desk cleaned & organized before started work